

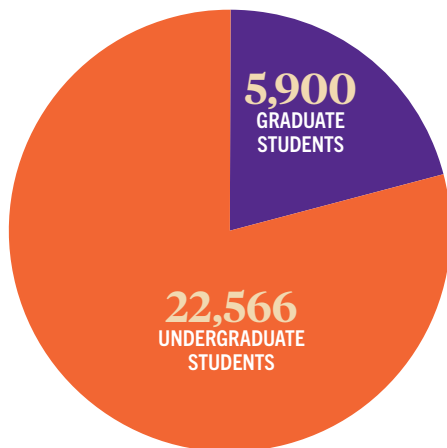
Fast Facts and Rankings

- No. 3** Most Trusted Public Universities
Morning Consult, 2022
- No. 7** Top 20 Best Schools for Internships (Public Schools)
The Princeton Review, 2022
- No. 9** Top 20 Best Alumni Networks (Public Schools)
The Princeton Review, 2022
- R-1** Classified as one of the nation's most active research institutions
Carnegie Classification of Institutions of Higher Education
- No. 31** Ranked among national public universities
U.S. News & World Report, 2023
- No. 6** Alumni giving among national public universities
U.S. News & World Report, 2023
- Best Value** One of the nation's best colleges for students seeking a superb education with great career preparation at an affordable price
The Princeton Review, 2023
- No. 9** Their Students Love These Colleges
The Princeton Review, 2023
- No. 1** Best Career Services
The Princeton Review, 2023
- No. 4** Students Love Their School Teams
The Princeton Review, 2023
- No. 2** Town-Gown Relations are Great
The Princeton Review, 2023
- No. 18** Happiest Students
The Princeton Review, 2023

CLEMSON

CLEMSON® By the Numbers

2022 ENROLLMENT

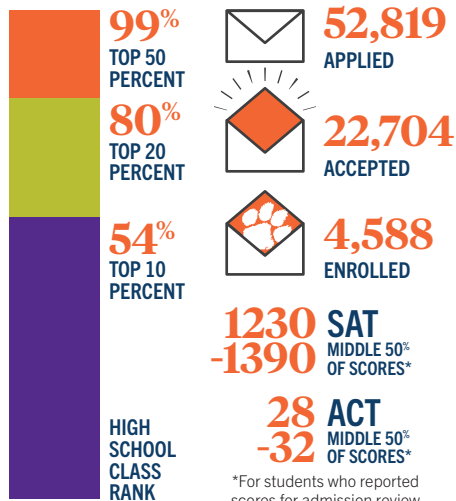


28,466
TOTAL STUDENTS

48%
MALE

52%
FEMALE

2022 FIRST-YEAR STUDENT PROFILE



*For students who reported scores for admission review

ACADEMICS REPORT



87%

INSTRUCTIONAL FACULTY WITH PH.D. OR EQUIVALENT



91%

FULL-TIME INSTRUCTIONAL FACULTY

16:1
STUDENT-TO-FACULTY RATIO

27
MEDIAN UNDERGRADUATE CLASS SIZE

GRADUATION RATE

85%
SIX-YEAR GRADUATION RATE FOR 2016 COHORT

RETENTION RATE

92%
RETENTION RATE FOR FALL 2021 CLASS

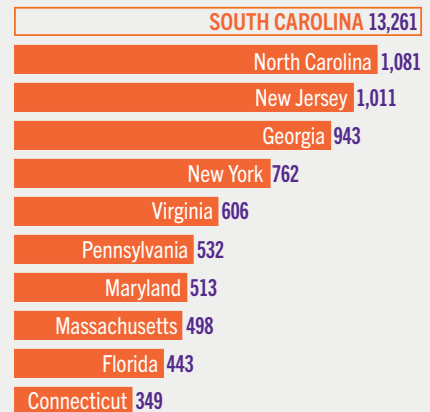
TEN MOST POPULAR UNDERGRADUATE DEGREES

Determined by degrees awarded by department for 2021-2022

1. Management
2. Psychology
3. Marketing
4. Biological Sciences
5. Financial Management
6. Mechanical Engineering
7. Nursing
8. Industrial Engineering
9. Computer Science
10. Civil Engineering

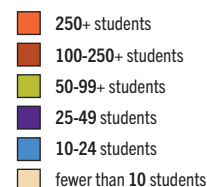
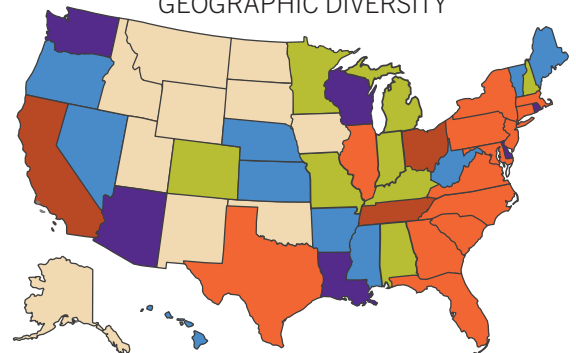
TOP STATES FOR UNDERGRADUATE ENROLLMENT

2022



Clemson University Office of Institutional Research

2022 UNDERGRADUATE GEOGRAPHIC DIVERSITY



2022 FIRST-YEAR STUDENT REPRESENTATION

52% South Carolina Residents

274 South Carolina High Schools

45 States and the District of Columbia

Connect with us

@clemsonuniv

@clemsonuniversity

@ClemsonUniv

@clemsonuniv

@clemsonuniversity

More information on anything
Clemson:
clemson.edu